

FALL & WINTER SOLUTIONS

GET READY FOR THE ELEMENTS



**RAIDER
HANSEN**

**RAIDER
HANSEN**

Abbotsford 604 859 2658
Burnaby 604 291 7442
Port Kells 604 888 2669

Nanaimo 250 751 1239
Penticton 250 492 8514
Kelowna 250 769 2110

Victoria 250 383 0223
Delta 604 946 1719
Quesnel 250 985 0778

SHOP PREMIUM APPAREL BRANDS AT RAIDER HANSEN

RAINWEAR APPAREL



WATERPROOF LIGHTWEIGHT SAFETY RAIN SUIT
PIO-V1080160



"THE ROCK" 300D OXFORD POLYESTER 3-IN-1 PARKA

Colour	Part No.	Sizes
Orange	PIO-V1083150	S-5XL
Yellow	PIO-V1083160	

PAIR WITH TO COMPLETE THE LOOK



HI-VIZ "THE ROCK" 300D OXFORD POLYESTER INSULATED BIB PANTS

Colour	Part No.	Sizes
Orange	PIO-V1150450	S-5XL
Yellow	PIO-V1150460	



ALTA HI-VIZ WATERPROOF SHELL JACKET/BIB PANT CSA

Colour	Type	Part No.	Sizes
Hi-Viz Yellow / Orange	Jacket	HH-71088-369	S-3XL
	Bib Pant	HH-71443-369	



ARMOUR TEAR RESISTANT JACKET/BIB PANT

Colour	Type	Part No.	Sizes
Cobalt / Orange	Jacket	HH-70201-550	S-3XL
	Bib Pant	HH-70501-550	



GALE WATERPROOF RAIN BIB

Colour	Part No.	Sizes
Black	HH-70582-990	S-3XL
Green	HH-70582-480	



WAVERLY WATERPROOF STORM SUIT

Colour	Part No.	Sizes
Hi-Viz Yellow/Orange	HH-70620-360	S-3XL



GALE WATERPROOF RAIN JACKET

Colour	Part No.	Sizes
Black	HH-70282-990	S-3XL
Green	HH-70282-480	

PAIR WITH TO COMPLETE THE LOOK

SHOP PREMIUM APPAREL BRANDS AT RAIDER HANSEN

WINTER APPAREL



-19°C
to/à 8°C

HI-VIZ SAFETY HOODIE POLYESTER FLEECE

Colour	Part No.	Sizes
Orange	PIO-V1060350	S-5XL
Yellow	PIO-V1060460	
Black	PIO-V1060471	



REVERSIBLE
LOOK

HI-VIZ REVERSIBLE INSULATED SAFETY VESTS

Colour	Part No.	Sizes
Orange	PIO-V1022450	S-5XL
Yellow	PIO-V1022460	
Yellow	PIO-V1022460	



QUILTED HOODED POLAR FLEECE SHIRT

Colour	Part No.	Sizes
Blue/Gray Plaid	PIO-V3080396	XS-4XL
Red/Black Plaid	PIO-V3080397	
Royal/Black Plaid	PIO-V3080393	
Camo	PIO-V3080490	

WINTER FOOTWEAR



BLACK PVC STEEL TOE/ PLATE BOOT

PIO-V4710270
Sizes: 3-13

- CSA Class 1 steel toe/steel plate
- Static dissipative
- Generous, comfortable fit
- Durable and flexible PVC shaft
- Heavy-duty PVC compounded sole
- Puncture- and tear-resistant
- 2 cut-off lines for shorter boot formats
- Not recommended for prolonged standing in wet cement, wash frequently

ICE TRACTION OPTIONS

ASK US FOR OUR AVAILABLE ICE TRACTION OPTIONS THAT BEST SUIT YOUR NEEDS



THE MOST VERSATILE MID-SOLE OFFERING

- Slim
- Low Profile
- Original
- High Profile



Light-Duty Use

Heavy-Duty Use

FULL LINE FULL-SOLE OFFERING

- Light Industrial
- All Purpose
- All Purpose Industrial
- Heavy Duty



Light-Duty Use

Heavy-Duty Use

SHOP PREMIUM HAND PROTECTION AT RAIDER HANSEN

LOCAL, IN-STOCK GLOVES SOLUTIONS



320i RED HOTS

Features: 10gg acrylic seamless knit shell with napped interior. Sandy foam latex palm coating. Snug-fitting knit wrist
34-320I
Sizes: S-XL



ICE GRIPPERS

Features: Seamless black nylon knit shell with 7 gauge heavy acrylic terry liner. protective 3/4 latex from grip coating.
RH-LNG-W
Sizes: S-XL



FLEXTIME WINTER

Features: Lightweight 3M Recycled Thinsulate™, Dryhide™ water-resistant full-grain goatskin leather palm. Snug-fitting elastic wrist with secure Velcro® closure
34-9005W
Sizes: S-XXL



VAN GOAT

Features: 3M Thinsulate™ C100 lining with an additional layer of microfleece, Cutshield™ premium P-aramid/steel/polyester liner, Dryhide™ Oil and water resistant full-grain goatskin leather. Snug-fitting shirred elastic wrist. Slip-on style cuff
34-9547TPR
Sizes: S-XXXL



SCAPE GOAT

Features: 3M Thinsulate™ C100 lining, full-grain goatskin leather. Drivers style with keystone thumb Snug-fitting shirred elastic wrist with slip-on style cuff
34-9545
Sizes: S-XXL



BIG DAWG

Features: 3M Recycled Thinsulate™ Full-grain cowhide leather, Cotton drill back, Shirred elastic wrist, Slip-on style safety cuff
34-94006HW
Sizes: S-XXXL



STEALTH BLACK OPS

Features: 10GG acrylic lining keeps hands warm in cold conditions, waterproof full dip flat latex first layer, Palm dip foam latex second layer for sure-grip, Snug-fitting knit wrist
34-9393
Sizes: S-XXL



STEALTH TRIPLE THREAT

Features: 10gg acrylic lining, 15gg cut resistant glass/nylon/steel shell heavy duty TPR on fingers, thumb, knuckles and back of hand, double dip coating, waterproof full dip flat nitrile first layer, 3/4 dip foam nitrile second layer for sure-grip snug-fitting knit wrist
34-9398TPR
Sizes: S-XXL



DEXTERITY® SNAGPVC

Features: High cut resistance for warmth down to -5°C / 23°F with palm coating for grip that won't stiffen in the cold
SG-SNAGPVC
Sizes: S-XL



SHOWA 477

Features: Foam grip and a dual nitrile coating ensure precision in wet and oily environments, whilst the acrylic liner provides protection from cold weather. The 477 remains flexible down to -50°C.
SHO-477
Sizes: M-XL

HEATED GLOVE



SUB ZERO

Features: Heated glove – Turned On™ battery powered technology offers 3 levels of heat up to 55 degrees Celsius. Hy+Dry® water resistant barrier, leather Wind and water resistant Taslon back, snug-fitting shirred elastic wrist with slip-on style gauntlet cuff for easy on/off
34-9508
Sizes: M-XL

HEATED GLOVE



BLACK ICE

Features: Heated glove – Turned On™ battery powered technology offers 3 levels of heat up to 55 degrees Celsius, touchscreen compatible fingertips, silicone printed palm for a sure-grip, slip-on style neoprene cuff with secure, velcro® closure
34-9509
Sizes: S/M, L/XL

SHOP JOBSITE LIGHTING AT RAIDER HANSEN

LIGHTING SOLUTIONS



RECHARGEABLE CLAMP LIGHT
COA-30684



REAR LOADED HEADLAMP
COA-30936



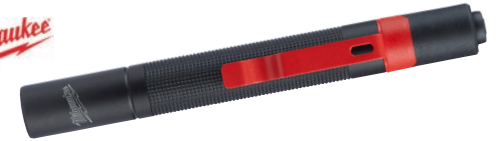
INSPECTION BEAM PENLIGHT - BLACK
COA-30539



12/3 100' STW METAL CAGE STRING LIGHT
149-7599SW



REDLITHIUM™ USB HARD HAT HEADLAMP
64-2163-21



PENLIGHT
64-2105



LED 400 LUMEN HEADLAMP
255-HDD32E



RECHARGEABLE KEYCHAIN LIGHT
COA-30896



LED STRING LIGHTS, 50' 6000 LUMENS
106-L002771

M18™ REDLITHIUM™ EXTENDED CAPACITY BATTERIES

Amp	Pack	Part No.
5 amp	2 pack	64-48-11-1852
6 amp	2 pack	64-48-11-1862
8 amp	1 pack	64-48-11-1880
12 amp	1 pack	64-48-11-1812



M18™ & M12™ MULTI-VOLTAGE CHARGER
64-48-59-1812



M18™ ROVER™ MOUNTING FLOOD LIGHT
64-2365-20



M18™ ROVER™ FLOOD LIGHT (TOOL-ONLY)
64-2361-20



M18™ RADIUS™ COMPACT SITE LIGHT WITH ONE-KEY™
64-2146-20



M18™ ROCKET™ DUAL POWER TOWER LIGHT
64-2131-20



M18™ ROCKET™ TOWER LIGHT/CHARGER
64-2136-20

SHOP SEASONAL SOLUTIONS AT RAIDER HANSEN

FALL AND WINTER SOLUTIONS



THERMAL HEATED VEST

DSI-PC300HV100
 Sizes: OS



OSCILLATING CERAMIC HEATER

Features: 1500 W / 120V / 5120BTU, 2 Heat settings: 750 W / 1500 W, Wide-angle oscillation, adjustable thermostat, 4-Position switch, Power indicator light, Overheat protection, Tip-over switch
 106-H005122



PORTABLE OPEN COIL HEATER

Features: Two heat settings (1500 W and 1000 W), provides full comfort and efficient operation, fully adjustable automatic thermostat, safety overload switch, power signal light, top mounted handle and controls, grounded plug and controls
 131-EA469



ICE MELTER, "RESPONSIBLE", 50LB BAG, -20C

Features: Less harmful to vegetation*, pet friendly choice, extended melting life, provides immediate response, colour coated for visual coverage (green tint), triple screened for consistent granulation
 DSA-8708572



ICE MELTER, "ULTIMATE", 50LB BAG, -30C

Features: Exceptionally fast acting formula, super effective to lower temperatures, superior lasting performance, colour coated for visual coverage (Blue Tint), provides immediate response
 DSA-8708672



WINDSHIELD WASHER FLUID, 3.78L REC-15-215



WINDOW & MIRROR DE-ICER, ARCTIC CLEAR - 500G YYN-200-90000



HAND & TOE WARMERS

Type	Part No.
Hand Warmers	PIO-V2054210
Toe Warmers	PIO-V2054310



RUBBER GRAY FLOOR SQUEEGEE, 24" 41-CSQ224



YELLOW MOP BUCKET WITH WRINGER 41-335-312YE



MOP HEAD WHITE, 20 OZ 41-01022



MOP HANDLE, SNAP 63" 41-577

SHOP SEASONAL SOLUTIONS AT RAIDER HANSEN

FALL AND WINTER SOLUTIONS



SAFETY ARM BANDS

Size	Part No.
Lime	PIO-V1040161-O/S
Orange	PIO-V1040151-O/S



SAFETY ANKLE BANDS

Size	Part No.
Lime	PIO-V1040261-O/S
Orange	PIO-V1040251-O/S



HARD HAT LINER

PIO-V4010410-O/S



BALACLAVA

PIO-V4010170-O/S



DRAIN COVER "DONUT", 4"

BMP-4CBD2416HF
Yellow Grate Size: 24"x16"



CATCH BASIN SILT SACK

BMP-DDS24240F



M18 FUEL™ BLOWER (TOOL ONLY)

64-2724-20



TRAFFIC CONES

Size	Part No.
18"	253-RS45015-C3M6
28"	253-RS70032CTOR3M



DELINEATOR

Type	Size	Part No.
Base	16x16	253-DPOST-BASE
Post	42"	253-DPOST-DG



24" POLY BLADE WOOD HANDLE SNOW SHOVEL

245-YPP24KL

POLY BLADE SNOW SHOVEL

Size	Part No.
21"	245-NPP21KD
26"	245-NPP26KD



TARPS

Blue, 4 mil

Size	Part No.
10'x14'	261-TARP1014B
10'x16'	261-TARP10X16B
10'x20'	261-TARP1020B
12'x12'	261-TARP1212B
12'x16'	261-TARP1216B
12'x24'	261-TARP1224B
16'x20'	261-TARP1620B
18'x24'	261-TARP1824B
20'x20'	261-TARP2020B
20'x30'	261-TARP2030B

MORE SIZES AVAILABLE!

ABOUT US

Established in 1959, **Raider Hansen** is the largest independently owned and operated distributor of supplies and services to the industrial and construction business sectors in British Columbia. With 9 branch locations, we are one of BC's largest distributors of safety equipment, fasteners, tools, abrasives and chemical supplies.

- Premium Products
- Specialist Training
- Equipment Rentals
- Vendor Managed Inventory
- Site Direct Sales & Service
- RIDGID® Tool Repair



RAIDER HANSEN

1 800 665 2658

raiderhansen.com

ABBOTSFORD
Unit 104 - 2707 Progressive Way

604 859 2658

BURNABY
8335 Winston Street

604 291 7442

DELTA
Unit 3 - 7201 72 Street

604 946 1719

KELOWNA
1888 Spall Road
250 769 2110

PENTICTON
310 Dawson Avenue
250 492 8514

NANAIMO
2237 McCullough Road
250 751 1239

QUESNEL
1063 Cariboo Hwy N
250 985 0778

PORT KELLS
Unit 105 - 19358 96 Avenue
604 888 2669

REPAIR CENTRE
Unit 105 - 19358 96 Avenue
604 530 0224

VICTORIA
Unit A - 661 Alpha Street
250 383 0223

